

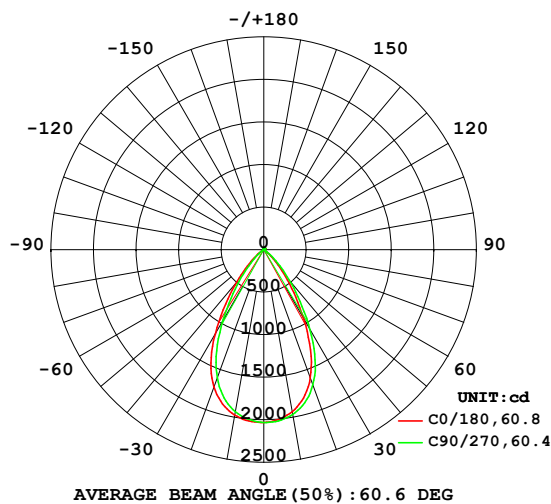
TLO030-31 36V700mA CXA1830-30G-NOY 60.6D 3000K CRI90 NA

LUMINAIRE PHOTOMETRIC TEST REPORT

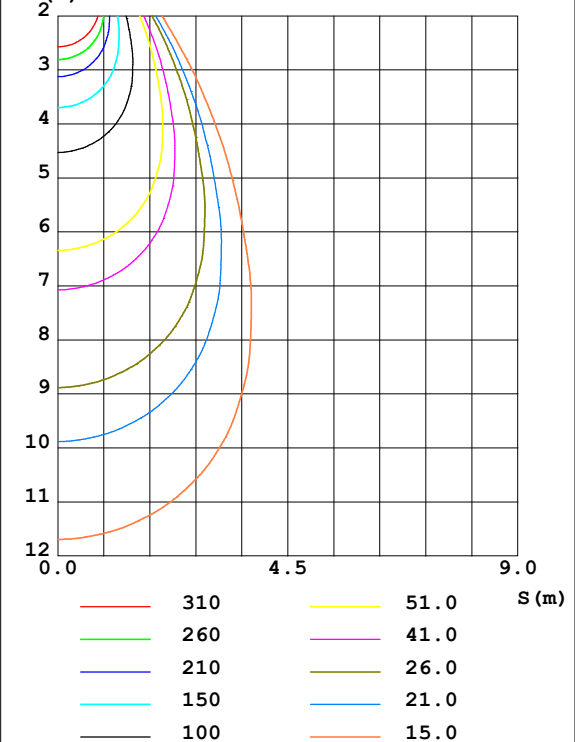
NAME: TLO030-31	TYPE: 60.6D	WEIGHT: 1
SPEC.: 3000K CRI90	DIM.:	SERIAL No.:
MFR.:	SUR.: 65	Shielding Angle:

DATA OF LAMP		PHOTOMETRIC DATA Eff: 78.53 lm/W			
MODEL		I _{max} (cd)	2035	S/MH (C0/180)	0.94
NOMINAL POWER (W)	30	LOR (%)	100.0	S/MH (C90/270)	0.88
RATED VOLTAGE (V)	120	TOTAL FLUX (lm)	2043.2	η UP, DN (C0-180)	1.2, 50.6
NOMINAL FLUX (lm)	2043.17	CIE CLASS	DIRECT	η UP, DN (C180-360)	1.2, 47.0
LAMPS INSIDE	1	η up (%)	2.4	CIBSE SHR NOM	0.75
TEST VOLTAGE (V)	120	η down (%)	97.6	CIBSE SHR MAX	0.95

LUMINOUS INTENSITY DISTRIBUTION DIAGRAM



C0 PLANE ISOLUX DIAGRAM (UNIT: lx)



C Range: 0 - 360DEG
C Interval: 22.5DEG
Test Speed: HIGH
Temperature: 28DEG
Operators: CJY
Test Date: 2024-08-30

γ Range: 0 - 180DEG
γ Interval: 1.0DEG
Test System: EVERFINE GO-2000B_V1 SYSTEM V2.0.401
Humidity: 65.0%
Test Distance: 5.190m [K=1.0000]
Remarks:

TLO030-31 36V700mA CXA1830-30G-NOY 60.6D 3000K CRI90 NA

ZONAL FLUX DIAGRAM

ZONAL FLUX DIAGRAM:

γ	C0	C45	C90	C135	C180	C225	C270	C315	γ	Φ zone	Φ total	%lum, lamp
10	1933	1938	1967	1991	1974	1968	1933	1906	0- 10	190.1	190.1	9.31,9.31
20	1600	1612	1690	1758	1715	1701	1601	1526	10- 20	512.6	702.7	34.4,34.4
30	940.6	960.8	1088	1216	1142	1119	962.8	843.1	20- 30	623.8	1327	64.9,64.9
40	364.1	385.8	471.3	552.6	489.3	477.6	378.7	306.4	30- 40	439.0	1766	86.4,86.4
50	80.19	87.47	124.7	158.5	132.1	125.9	83.28	56.86	40- 50	186.4	1952	95.5,95.5
60	5.573	5.616	9.177	16.21	11.27	9.550	5.925	4.367	50- 60	37.88	1990	97.4,97.4
70	1.193	1.228	1.542	2.019	1.589	1.321	1.148	0.8982	60- 70	3.529	1993	97.6,97.6
80	0.4091	0.4163	0.4677	0.5543	0.3933	0.3738	0.3430	0.3044	70- 80	0.7932	1994	97.6,97.6
90	0.4130	0.4091	0.3884	0.3623	0.3149	0.3148	0.3480	0.3759	80- 90	0.3853	1994	97.6,97.6
100	0.9347	0.9233	0.7612	0.6329	0.6193	0.6499	0.7961	0.9257	90-100	0.5694	1995	97.6,97.6
110	2.498	2.480	2.031	1.681	1.709	1.796	2.177	2.525	100-110	1.412	1996	97.7,97.7
120	5.587	5.544	4.756	4.095	4.242	4.405	5.096	5.712	110-120	3.336	2000	97.9,97.9
130	10.02	9.905	8.913	8.078	8.307	8.510	9.420	10.20	120-130	6.197	2006	98.2,98.2
140	14.88	14.85	13.94	12.97	13.21	13.40	14.39	15.11	130-140	8.929	2015	98.6,98.6
150	18.99	19.10	18.49	17.66	17.68	17.96	18.74	19.14	140-150	10.22	2025	99.1,99.1
160	21.63	21.90	21.82	21.05	20.90	21.16	21.96	21.84	150-160	9.252	2034	99.6,99.6
170	23.85	24.04	24.20	23.68	23.58	23.80	24.23	23.99	160-170	6.412	2041	99.9,99.9
180	25.36	25.65	25.72	25.65	25.42	25.70	25.76	25.69	170-180	2.348	2043	100,100
DEG	LUMINOUS INTENSITY:cd									UNIT:lm		

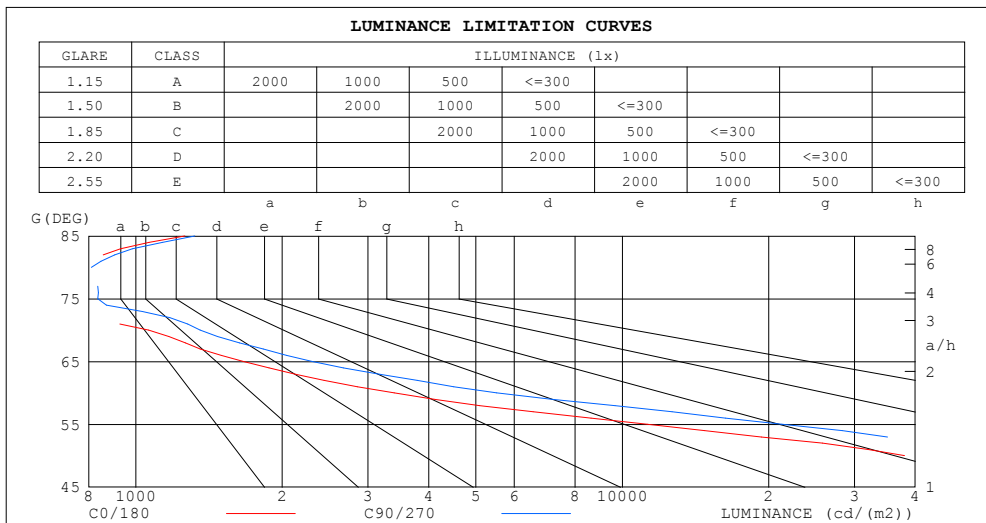
C Range: 0 - 360DEG
C Interval: 22.5DEG
Test Speed: HIGH
Temperature:28DEG
Operators:CJY
Test Date:2024-08-30

γ Range: 0 - 180DEG
 γ Interval: 1.0DEG
Test System:EVERFINE GO-2000B_V1 SYSTEM V2.0.401
Humidity:65.0%
Test Distance:5.190m [K=1.0000]
Remarks:

TLO030-31 36V700mA CXA1830-30G-NOY 60.6D 3000K CRI90 NA

LUMINANCE LIMITATION CURVES

NAME: TLO030-31	TYPE: 60.6D	WEIGHT: 1
SPEC.: 3000K CRI90	DIM.:	SERIAL No.:
MFR.:	SUR.: 65	Shielding Angle:



LUMINANCE cd/(m2)		
G (DEG)	C0/180	C90/270
85	1261	1323
80	718	810
75	727	835
70	1063	1356
65	1663	2307
60	3396	5520
55	11251	21293
50	38016	58332
45	80299	113322

C Range: 0 - 360DEG
 C Interval: 22.5DEG
 Test Speed: HIGH
 Temperature: 28DEG
 Operators: CJY
 Test Date: 2024-08-30

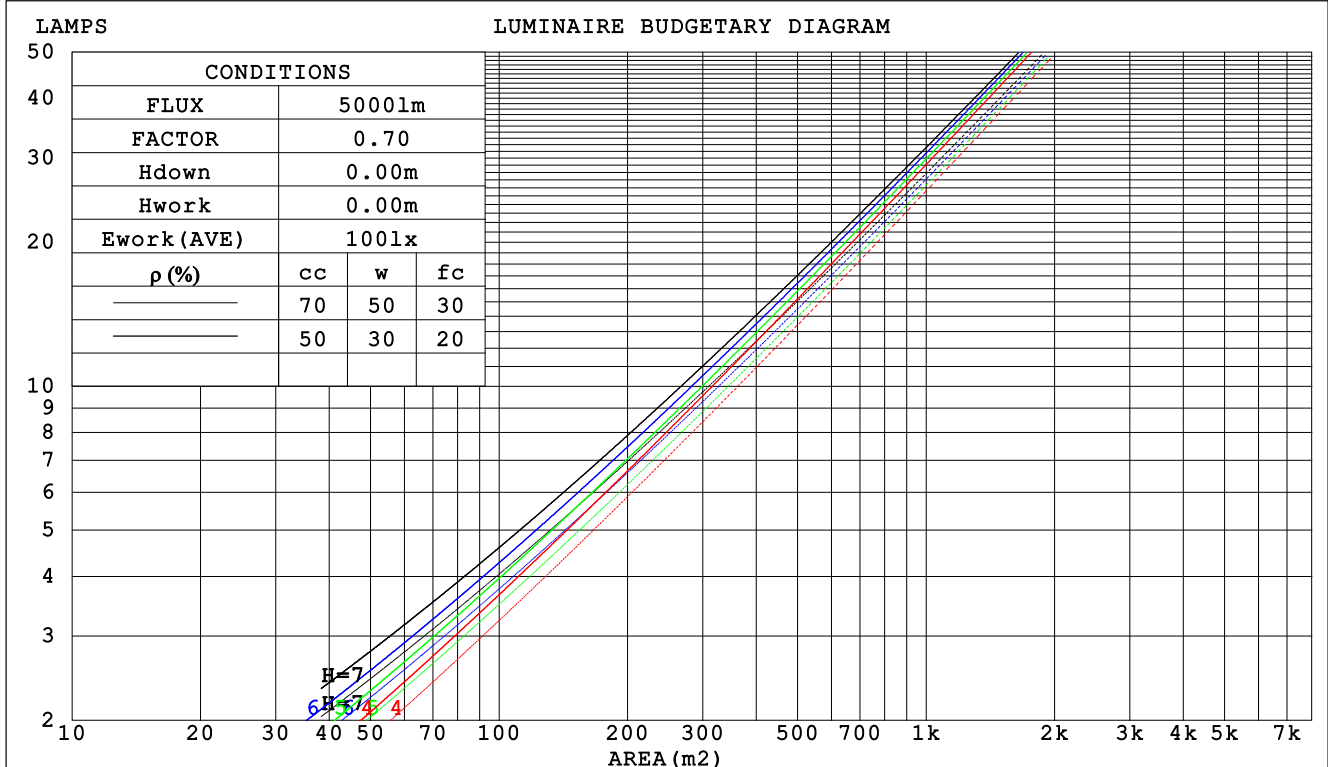
γ Range: 0 - 180DEG
 γ Interval: 1.0DEG
 Test System: EVERFINE GO-2000B_V1 SYSTEM V2.0.401
 Humidity: 65.0%
 Test Distance: 5.190m [K=1.0000]
 Remarks:

TLO030-31 36V700mA CXA1830-30G-NOY 60.6D 3000K CRI90 NA

CU AND LUMINAIRE BUDGETARY ESTIMATE DIAGRAM

NAME: TLO030-31	TYPE: 60.6D	WEIGHT: 1
SPEC.: 3000K CRI90	DIM.:	SERIAL No.:
MFR.:	SUR.: 65	Shielding Angle:

ρ_{cc}	80%			70%			50%			30%			10%			0
ρ_w	50%	30%	10%	50%	30%	10%	50%	30%	10%	50%	30%	10%	50%	30%	10%	0
ρ_{fc}	20%			20%			20%			20%			20%			0
RCR	RCR:Room Cavity Ratio						Coefficients of Utilization(CU)									
0.0	1.18	1.18	1.18	1.15	1.15	1.15	1.10	1.10	1.10	1.05	1.05	1.05	.00	.00	.00	.98
1.0	1.10	1.07	1.05	1.07	1.05	1.03	1.03	1.01	.99	.99	.97	.96	.95	.94	.93	.91
2.0	1.02	.98	.94	.90	.96	.93	.96	.93	.90	.93	.90	.88	.90	.88	.86	.84
3.0	.94	.89	.85	.93	.88	.84	.90	.86	.83	.87	.84	.81	.85	.82	.80	.78
4.0	.88	.82	.78	.86	.81	.77	.84	.79	.76	.82	.78	.75	.80	.76	.74	.72
5.0	.82	.76	.71	.81	.75	.71	.79	.74	.70	.77	.72	.69	.75	.71	.68	.67
6.0	.76	.70	.66	.75	.70	.65	.74	.69	.65	.72	.68	.64	.71	.67	.64	.62
7.0	.72	.65	.61	.71	.65	.61	.69	.64	.60	.68	.63	.60	.66	.62	.59	.58
8.0	.67	.61	.57	.66	.61	.56	.65	.60	.56	.64	.59	.56	.63	.58	.55	.54
9.0	.63	.57	.53	.63	.57	.53	.61	.56	.52	.60	.56	.52	.59	.55	.52	.50
10.0	.60	.54	.50	.59	.53	.49	.58	.53	.49	.57	.52	.49	.56	.52	.49	.47



C Range: 0 - 360DEG
C Interval: 22.5DEG
Test Speed: HIGH
Temperature: 28DEG
Operators: CJY
Test Date: 2024-08-30

γ Range: 0 - 180DEG
 γ Interval: 1.0DEG
Test System: EVERFINE GO-2000B_V1 SYSTEM V2.0.401
Humidity: 65.0%
Test Distance: 5.190m [K=1.0000]
Remarks:

TLO030-31 36V700mA CXA1830-30G-NOY 60.6D 3000K CRI90 NA

WEC AND CCEC

NAME: TLO030-31	TYPE: 60.6D	WEIGHT: 1
SPEC.: 3000K CRI90	DIM.:	SERIAL No.:
MFR.:	SUR.: 65	Shielding Angle:

pcc	80%			70%			50%			30%			10%			0	
pw	50%	30%	10%	50%	30%	10%	50%	30%	10%	50%	30%	10%	50%	30%	10%	0	
pfc	20%			20%			20%			20%			20%			0	
RCR	RCR:Room Cavity Ratio						Wall Exitance Coefficients (WEC)										
0.0																	
1.0	.185	.105	.033	.177	.101	.032	.163	.094	.030	.150	.087	.028	.138	.080	.026		
2.0	.178	.097	.030	.171	.094	.029	.159	.089	.028	.148	.083	.026	.138	.078	.025		
3.0	.170	.090	.027	.164	.088	.026	.154	.083	.025	.144	.079	.024	.136	.075	.023		
4.0	.162	.084	.025	.157	.082	.024	.148	.079	.023	.140	.075	.023	.132	.072	.022		
5.0	.155	.079	.023	.150	.077	.022	.142	.074	.022	.135	.071	.021	.128	.068	.021		
6.0	.147	.074	.021	.144	.073	.021	.137	.070	.020	.130	.068	.020	.124	.065	.019		
7.0	.141	.070	.020	.138	.069	.020	.131	.066	.019	.125	.064	.019	.120	.062	.018		
8.0	.135	.066	.019	.132	.065	.018	.126	.063	.018	.121	.061	.018	.116	.059	.017		
9.0	.129	.062	.017	.126	.062	.017	.121	.060	.017	.116	.058	.017	.112	.057	.016		
10.0	.124	.059	.016	.121	.059	.016	.117	.057	.016	.112	.056	.016	.108	.054	.016		

pcc	80%			70%			50%			30%			10%			0	
pw	50%	30%	10%	50%	30%	10%	50%	30%	10%	50%	30%	10%	50%	30%	10%	0	
pfc	20%			20%			20%			20%			20%			0	
RCR	RCR:Room Cavity Ratio						Ceiling Cavity Exitance Coefficients(CCEC)										
0.0	.209	.209	.209	.178	.178	.178	.122	.122	.122	.070	.070	.070	.022	.022	.022		
1.0	.190	.176	.163	.163	.151	.140	.111	.104	.097	.064	.060	.056	.020	.019	.018		
2.0	.175	.151	.130	.150	.130	.113	.103	.090	.079	.059	.052	.046	.019	.017	.015		
3.0	.164	.132	.107	.140	.114	.093	.096	.079	.065	.056	.046	.038	.018	.015	.013		
4.0	.154	.118	.090	.132	.102	.078	.091	.071	.055	.053	.041	.033	.017	.014	.011		
5.0	.146	.106	.077	.125	.092	.067	.086	.064	.047	.050	.038	.028	.016	.012	.009		
6.0	.139	.097	.067	.119	.084	.059	.082	.059	.042	.048	.035	.025	.015	.011	.008		
7.0	.132	.090	.060	.114	.078	.052	.079	.055	.037	.046	.032	.022	.015	.011	.007		
8.0	.127	.084	.054	.109	.073	.047	.076	.051	.033	.044	.030	.020	.014	.010	.007		
9.0	.122	.079	.049	.105	.068	.043	.073	.048	.031	.042	.028	.018	.014	.009	.006		
10.0	.117	.074	.046	.101	.064	.040	.070	.045	.028	.041	.027	.017	.013	.009	.006		

C Range: 0 - 360DEG
C Interval: 22.5DEG
Test Speed: HIGH
Temperature: 28DEG
Operators: CJY
Test Date: 2024-08-30

γ Range: 0 - 180DEG
γ Interval: 1.0DEG
Test System: EVERFINE GO-2000B_V1 SYSTEM V2.0.401
Humidity: 65.0%
Test Distance: 5.190m [K=1.0000]
Remarks:

TLO030-31 36V700mA CXA1830-30G-NOY 60.6D 3000K CRI90 NA

UGR(Unified Glare Rating) Table

NAME: TLO030-31					TYPE: 60.6D					WEIGHT: 1				
SPEC.: 3000K CRI90					DIM.:					SERIAL No.:				
MFR.:					SUR.: 65					Shielding Angle:				
ceiling/cavity	0.7	0.7	0.5	0.5	0.3	0.7	0.7	0.5	0.5	0.3				
walls	0.5	0.3	0.5	0.3	0.3	0.5	0.3	0.5	0.3	0.3				
working plane	0.2	0.2	0.2	0.2	0.2	0.2	0.2	0.2	0.2	0.2				
Room dimensions					Viewed crosswise					Viewed endwise				
x = 2H y = 2H					20.5	21.5	20.8	21.7	21.9	21.4	22.4	21.7	22.6	22.8
3H					20.3	21.2	20.6	21.5	21.7	21.3	22.1	21.5	22.4	22.6
4H					20.3	21.1	20.6	21.4	21.6	21.2	22.0	21.5	22.3	22.5
6H					20.2	20.9	20.5	21.2	21.5	21.1	21.8	21.4	22.1	22.4
8H					20.1	20.9	20.5	21.2	21.5	21.0	21.8	21.4	22.1	22.4
12H					20.1	20.8	20.4	21.1	21.4	21.0	21.7	21.3	22.0	22.3
4H 2H					20.3	21.1	20.6	21.4	21.6	21.2	22.0	21.5	22.3	22.5
3H					20.1	20.8	20.4	21.1	21.4	21.0	21.7	21.3	22.0	22.3
4H					20.0	20.6	20.4	21.0	21.3	20.9	21.5	21.3	21.9	22.2
6H					19.9	20.4	20.3	20.8	21.2	20.8	21.3	21.2	21.7	22.1
8H					19.8	20.3	20.3	20.7	21.2	20.7	21.2	21.2	21.6	22.1
12H					19.8	20.2	20.2	20.7	21.1	20.7	21.1	21.1	21.6	22.0
8H 4H					19.8	20.3	20.2	20.7	21.2	20.7	21.2	21.2	21.6	22.1
6H					19.7	20.1	20.2	20.6	21.0	20.6	21.0	21.1	21.5	21.9
8H					19.7	20.0	20.1	20.5	21.0	20.6	20.9	21.0	21.4	21.9
12H					19.6	19.9	20.1	20.4	20.9	20.5	20.8	21.0	21.3	21.8
12H 4H					19.8	20.2	20.2	20.7	21.1	20.7	21.1	21.1	21.6	22.0
6H					19.7	20.0	20.1	20.5	21.0	20.6	20.9	21.0	21.4	21.9
8H					19.6	19.9	20.1	20.4	20.9	20.5	20.8	21.0	21.3	21.8
Variations with the observer position at spacings:														
S = 1.0H					+ 2.7 / -15.9					+ 3.1 / -14.6				
1.5H					+ 4.4 / -11.8					+ 4.6 / -11.6				
2.0H					+ 6.5 / -15.8					+ 7.1 / -16.9				

CIE Pub.117, 2043 lm Total Lamp Luminous Flux Correct (8log(F/F0) = 2.5)

C Range: 0 - 360DEG
C Interval: 22.5DEG
Test Speed: HIGH
Temperature: 28DEG
Operators: CJY
Test Date: 2024-08-30

γ Range: 0 - 180DEG
γ Interval: 1.0DEG
Test System: EVERFINE GO-2000B_V1 SYSTEM V2.0.401
Humidity: 65.0%
Test Distance: 5.190m [K=1.0000]
Remarks:

TL0030-31 36V700mA CXA1830-30G-NOY 60.6D 3000K CRI90 NA

UTILIZATION FACTORS TABLE

NAME: TLO030-31	TYPE: 60.6D	WEIGHT: 1
SPEC.: 3000K CRI90	DIM.:	SERIAL No.:
MFR.:	SUR.: 65	Shielding Angle:

REFLECTANCE										
Ceiling	0.8	0.8	0.8	0.7	0.7	0.7	0.5	0.5	0.5	0
Walls	0.7	0.5	0.3	0.7	0.5	0.3	0.7	0.5	0.3	0
Working plane	0.2	0.2	0.2	0.2	0.2	0.2	0.2	0.2	0.2	0
ROOM INDEX	UTILIZATION FACTORS (PERCENT) k(RI) x RCR = 5									
k = 0.60	83	76	72	82	76	72	81	75	71	67
0.80	91	85	80	90	84	80	89	83	80	75
1.00	96	90	86	95	90	86	93	89	85	81
1.25	101	95	91	100	94	91	97	93	90	85
1.50	104	99	95	102	98	94	100	96	93	88
2.00	107	102	99	105	101	98	102	99	96	90
2.50	109	105	101	107	103	100	103	100	98	91
3.00	110	107	104	108	105	103	105	102	100	93
4.00	113	110	107	110	108	106	106	104	102	95
5.00	114	111	109	111	109	107	107	105	104	95
ROOM INDEX	UF(total)									Direct
According to DIN EN 13032-2 2004				Suspended				SHR _{NOM} = 1.25		

C Range: 0 - 360DEG
C Interval: 22.5DEG
Test Speed: HIGH
Temperature: 28DEG
Operators: CJY
Test Date: 2024-08-30

```

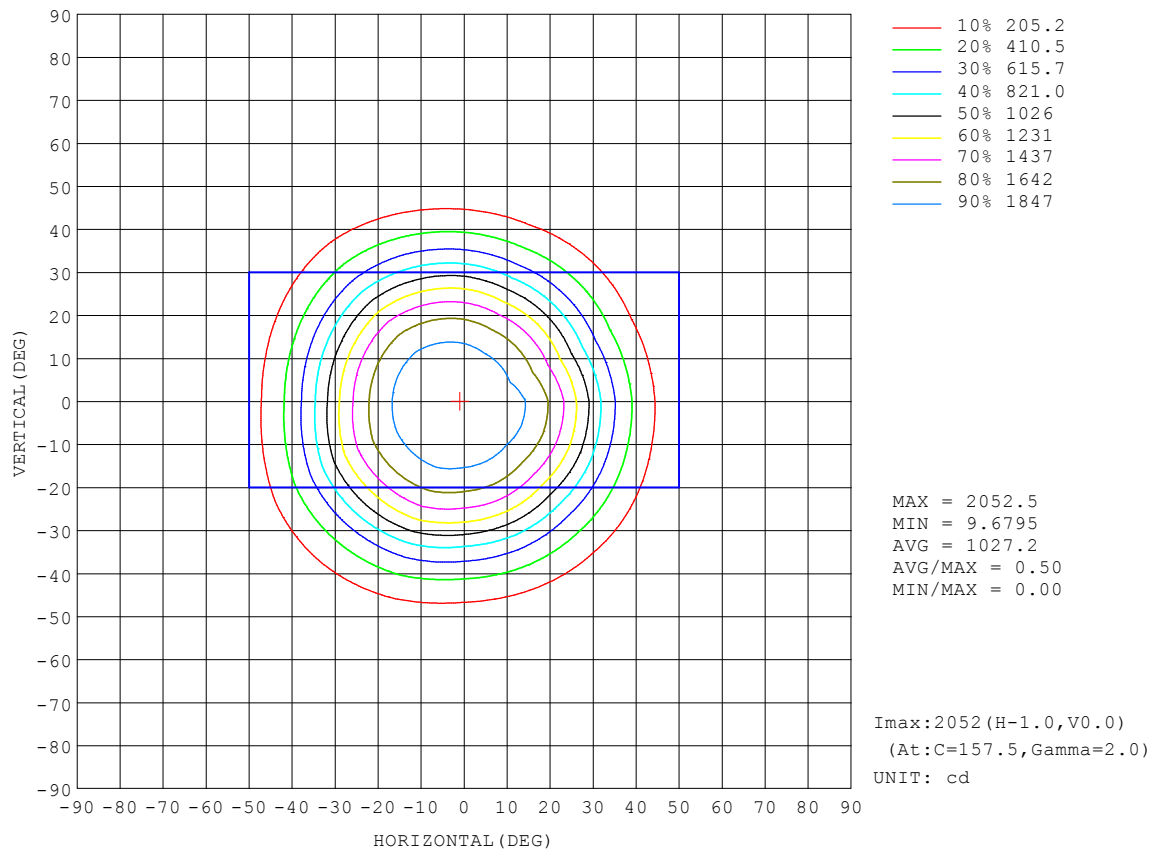
γ Range: 0 - 180DEG
γ Interval: 1.0DEG
Test System:EVERFINE GO-2000B_V1 SYSTEM V2.0.401
Humidity:65.0%
Test Distance:5.190m [K=1.0000]
Remarks:

```

TLO030-31 36V700mA CXA1830-30G-NOY 60.6D 3000K CRI90 NA

ISOCANDELA DIAGRAM

NAME: TLO030-31	TYPE: 60.6D	WEIGHT: 1
SPEC.: 3000K CRI90	DIM.:	SERIAL No.:
MFR.:	SUR.: 65	Shielding Angle:



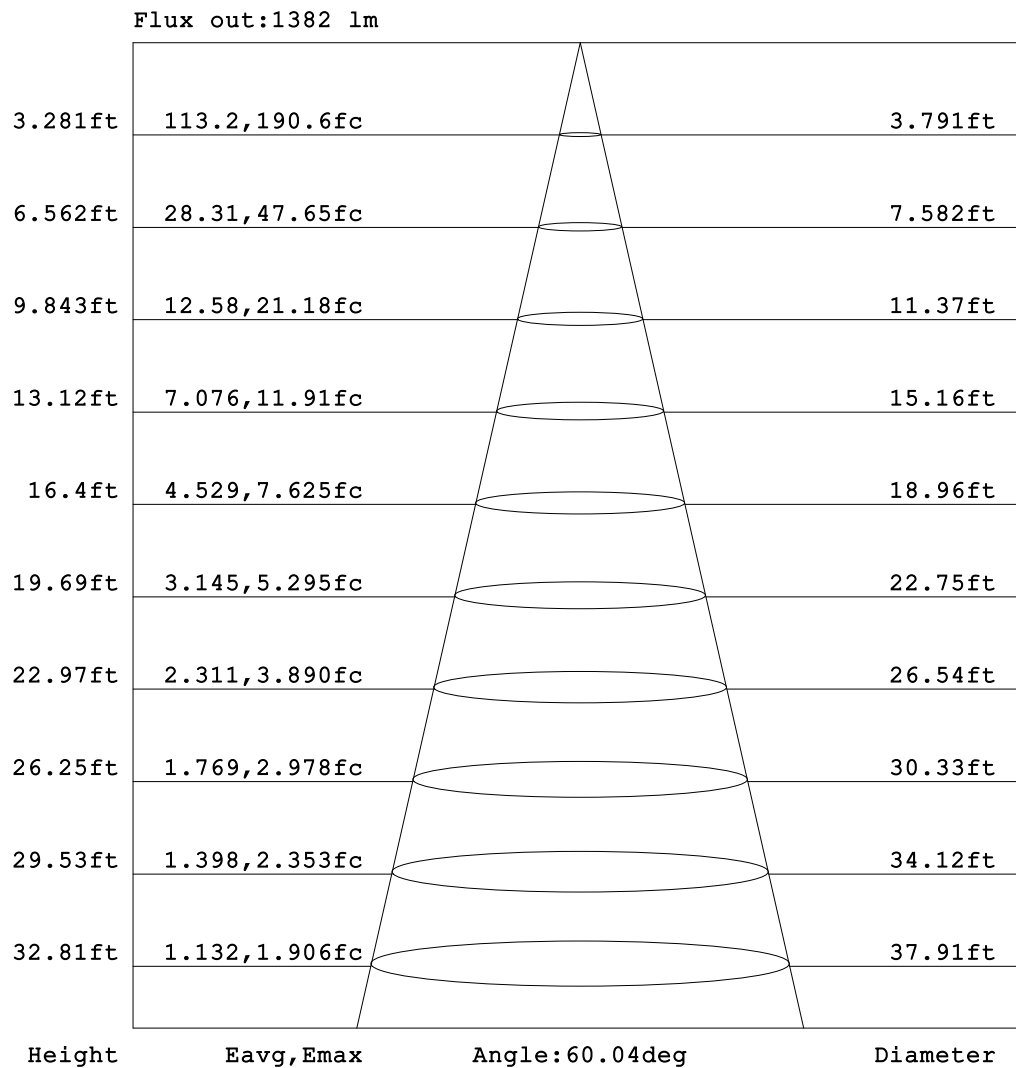
C Range: 0 - 360DEG
C Interval: 22.5DEG
Test Speed: HIGH
Temperature: 28DEG
Operators: CJY
Test Date: 2024-08-30

γ Range: 0 - 180DEG
γ Interval: 1.0DEG
Test System: EVERFINE GO-2000B_V1 SYSTEM V2.0.401
Humidity: 65.0%
Test Distance: 5.190m [K=1.0000]
Remarks:

TLO030-31 36V700mA CXA1830-30G-NOY 60.6D 3000K CRI90 NA

AAI Figure

NAME: TLO030-31	TYPE: 60.6D	WEIGHT: 1
SPEC.: 3000K CRI90	DIM.:	SERIAL No.:
MFR.:	SUR.: 65	Shielding Angle:



Note: The Curves indicate the illuminated area and the average illumination when the luminaire is at different distance.

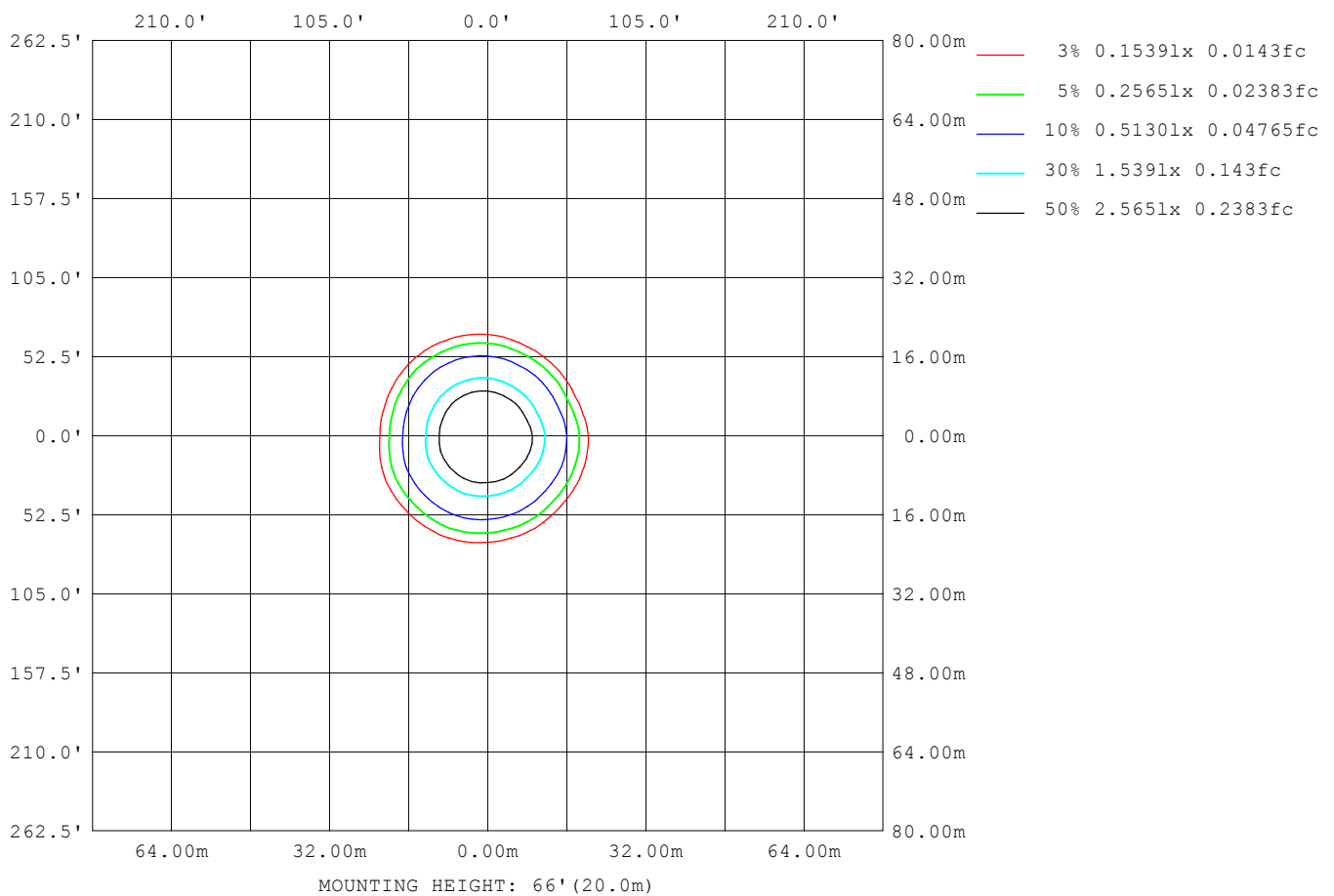
C Range: 0 - 360DEG
C Interval: 22.5DEG
Test Speed: HIGH
Temperature: 28DEG
Operators: CJY
Test Date: 2024-08-30

γ Range: 0 - 180DEG
γ Interval: 1.0DEG
Test System: EVERFINE GO-2000B_V1 SYSTEM V2.0.401
Humidity: 65.0%
Test Distance: 5.190m [K=1.0000]
Remarks:

TLO030-31 36V700mA CXA1830-30G-NOY 60.6D 3000K CRI90 NA

ISOLUX DIAGRAM

NAME: TLO030-31	TYPE: 60.6D	WEIGHT: 1
SPEC.: 3000K CRI90	DIM.:	SERIAL No.:
MFR.:	SUR.: 65	Shielding Angle:



C Range: 0 - 360DEG
C Interval: 22.5DEG
Test Speed: HIGH
Temperature: 28DEG
Operators: CJY
Test Date: 2024-08-30

γ Range: 0 - 180DEG
γ Interval: 1.0DEG
Test System: EVERFINE GO-2000B_V1 SYSTEM V2.0.401
Humidity: 65.0%
Test Distance: 5.190m [K=1.0000]
Remarks:

TLO030-31 36V700mA CXA1830-30G-NOY 60.6D 3000K CRI90 NA

LED Avg.L Report

NAME: TLO030-31	TYPE: 60.6D	WEIGHT: 1
SPEC.: 3000K CRI90	DIM.:	SERIAL No.:
MFR.:	SUR.: 65	Shielding Angle:

AvgL	cd/m2
L_0~180 (65) av	2063
L_0~180 (75) av	778
L_0~180 (85) av	1142
L_90~270 (65) av	1978
L_90~270 (75) av	744
L_90~270 (85) av	1177
L_45 (65) av	2117
L_45 (75) av	793
L_45 (85) av	1179

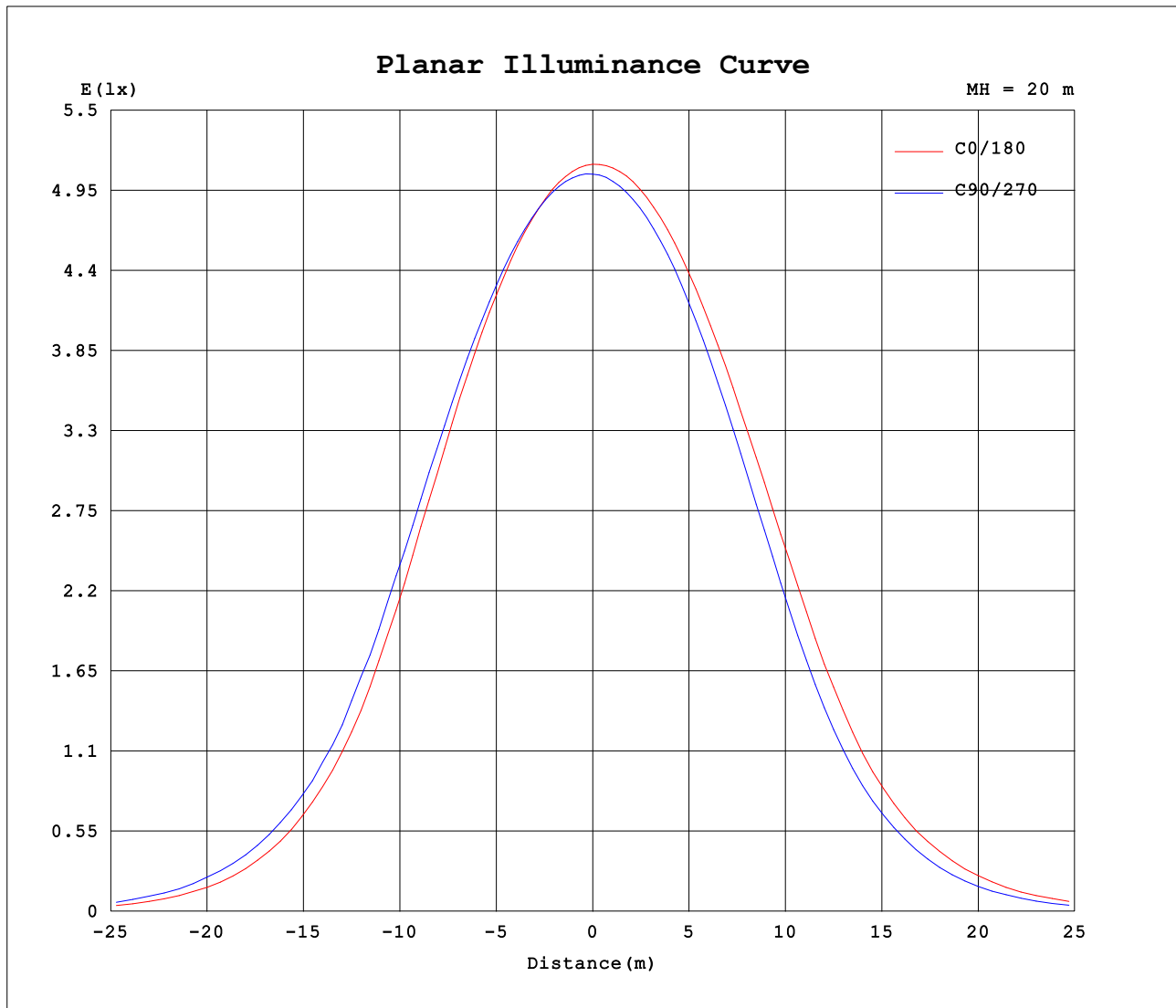
Standard: GB/T 29293-2012

C Range: 0 - 360DEG
C Interval: 22.5DEG
Test Speed: HIGH
Temperature: 28DEG
Operators: CJY
Test Date: 2024-08-30

γ Range: 0 - 180DEG
γ Interval: 1.0DEG
Test System: EVERFINE GO-2000B_V1 SYSTEM V2.0.401
Humidity: 65.0%
Test Distance: 5.190m [K=1.0000]
Remarks:

TLO030-31 36V700mA CXA1830-30G-NOY 60.6D 3000K CRI90 NA

Planar Illuminance Curve



C Range: 0 - 360DEG
 C Interval: 22.5DEG
 Test Speed: HIGH
 Temperature: 28DEG
 Operators: CJY
 Test Date: 2024-08-30

γ Range: 0 - 180DEG
 γ Interval: 1.0DEG
 Test System: EVERFINE GO-2000B_V1 SYSTEM V2.0.401
 Humidity: 65.0%
 Test Distance: 5.190m [K=1.0000]
 Remarks:

TLO030-31 36V700mA CXA1830-30G-NOY 60.6D 3000K CRI90 NA

LUMINOUS DISTRIBUTION INTENSITY DATA

NAME: TLO030-31	TYPE: 60.6D	WEIGHT: 1
SPEC.: 3000K CRI90	DIM.:	SERIAL No.:
MFR.:	SUR.: 65	Shielding Angle:

Table--1

UNIT: cd

C (DEG) γ (DEG)	0	22.5	45	67.5	90	112.5	135	157.5	180	202.5	225	247.5	270	292.5	315	337.5			
0	2031	2031	2031	2031	2031	2031	2031	2031	2031	2031	2031	2031	2031	2031	2031	2031			
5	2004	2006	2006	2013	2019	2028	2030	2031	2022	2020	2019	2011	2003	1994	1992	1990			
10	1933	1939	1938	1954	1967	1986	1991	1996	1974	1971	1968	1951	1933	1912	1906	1903			
15	1806	1817	1814	1840	1863	1898	1906	1915	1877	1872	1868	1836	1805	1764	1757	1750			
20	1600	1619	1612	1656	1690	1746	1758	1775	1715	1707	1701	1650	1601	1536	1526	1514			
25	1300	1331	1316	1385	1427	1514	1531	1560	1471	1460	1450	1380	1314	1221	1207	1192			
30	941	971	961	1035	1088	1193	1216	1258	1142	1128	1119	1038	963	864	843	831			
35	618	631	633	692	749	831	856	895	783	774	766	695	631	556	539	529			
40	364	377	386	430	471	528	553	571	489	485	478	429	379	321	306	298			
45	186	198	204	233	266	310	321	334	275	268	262	228	194	159	150	145			
50	80.2	85.9	87.5	106	125	154	159	167	132	127	126	103	83.3	64.0	56.9	56.8			
55	21.2	23.2	22.1	31.2	40.6	59.6	64.1	66.6	48.1	46.0	44.1	33.3	24.1	16.4	14.4	13.4			
60	5.57	5.84	5.62	7.34	9.18	14.5	16.2	18.0	11.3	10.3	9.55	7.31	5.93	4.68	4.37	4.15			
65	2.31	2.37	2.35	2.77	3.24	4.38	4.66	4.99	3.47	3.14	2.95	2.55	2.30	1.98	1.91	1.82			
70	1.19	1.23	1.23	1.41	1.54	1.90	2.02	2.09	1.59	1.42	1.32	1.24	1.15	0.96	0.90	0.82			
75	0.62	0.64	0.65	0.65	0.72	0.92	0.99	1.07	0.72	0.68	0.63	0.60	0.56	0.50	0.46	0.44			
80	0.41	0.40	0.42	0.42	0.47	0.51	0.55	0.59	0.39	0.40	0.37	0.38	0.34	0.34	0.30	0.32			
85	0.36	0.36	0.37	0.37	0.38	0.38	0.40	0.38	0.30	0.31	0.29	0.30	0.30	0.29	0.30	0.30			
90	0.41	0.43	0.41	0.41	0.39	0.38	0.36	0.37	0.31	0.30	0.31	0.30	0.35	0.35	0.38	0.36			
95	0.59	0.59	0.58	0.55	0.50	0.47	0.44	0.45	0.40	0.39	0.42	0.43	0.49	0.53	0.57	0.55			
100	0.93	0.93	0.92	0.84	0.76	0.68	0.63	0.63	0.62	0.62	0.65	0.71	0.80	0.88	0.93	0.93			
105	1.54	1.51	1.53	1.37	1.25	1.08	1.01	0.99	1.02	1.05	1.08	1.20	1.33	1.51	1.55	1.59			
110	2.50	2.44	2.48	2.21	2.03	1.76	1.68	1.62	1.71	1.77	1.80	1.99	2.18	2.46	2.53	2.61			
115	3.84	3.79	3.80	3.47	3.20	2.79	2.70	2.61	2.76	2.85	2.90	3.15	3.44	3.81	3.93	4.00			
120	5.59	5.51	5.54	5.12	4.76	4.27	4.09	4.02	4.24	4.31	4.41	4.72	5.10	5.57	5.71	5.82			
125	7.69	7.58	7.62	7.13	6.70	6.11	5.93	5.81	6.11	6.20	6.30	6.69	7.12	7.68	7.85	7.95			
130	10.0	9.90	9.90	9.41	8.91	8.29	8.08	7.94	8.31	8.39	8.51	8.94	9.42	10.02	10.2	10.3			
135	12.5	12.4	12.4	11.9	11.4	10.7	10.5	10.3	10.7	10.8	10.9	11.3	11.9	12.4	12.7	12.7			
140	14.9	14.8	14.9	14.4	13.9	13.2	13.0	12.8	13.2	13.3	13.4	13.8	14.4	14.9	15.1	15.1			
145	17.1	17.1	17.1	16.7	16.4	15.7	15.4	15.3	15.6	15.6	15.8	16.2	16.7	17.2	17.3	17.3			
150	19.0	18.9	19.1	18.8	18.5	17.9	17.7	17.5	17.7	17.7	18.0	18.3	18.7	19.1	19.1	19.0			
155	20.4	20.5	20.7	20.6	20.4	19.9	19.5	19.4	19.4	19.5	19.7	20.2	20.5	20.7	20.6	20.4			
160	21.6	21.7	21.9	22.0	21.8	21.4	21.0	20.9	20.9	20.9	21.2	21.6	22.0	22.1	21.8	21.6			
165	22.8	22.8	23.1	23.2	23.1	22.7	22.4	22.2	22.3	22.3	22.5	22.9	23.2	23.2	22.9	22.7			
170	23.8	23.9	24.0	24.2	24.2	23.9	23.7	23.6	23.6	23.7	23.8	23.9	24.2	24.2	24.0	23.9			
175	24.8	24.9	25.0	25.1	25.0	25.0	25.0	24.8	24.7	24.9	25.1	25.1	25.2	25.2	25.1	24.8			
180	25.4	25.5	25.7	25.6	25.7	25.6	25.6	25.4	25.4	25.4	25.7	25.6	25.8	25.6	25.7	25.4			

C Range: 0 - 360DEG
C Interval: 22.5DEG
Test Speed: HIGH
Temperature: 28DEG
Operators: CJY
Test Date: 2024-08-30

γ Range: 0 - 180DEG
γ Interval: 1.0DEG
Test System: EVERFINE GO-2000B_V1 SYSTEM V2.0.401
Humidity: 65.0%
Test Distance: 5.190m [K=1.0000]
Remarks: